

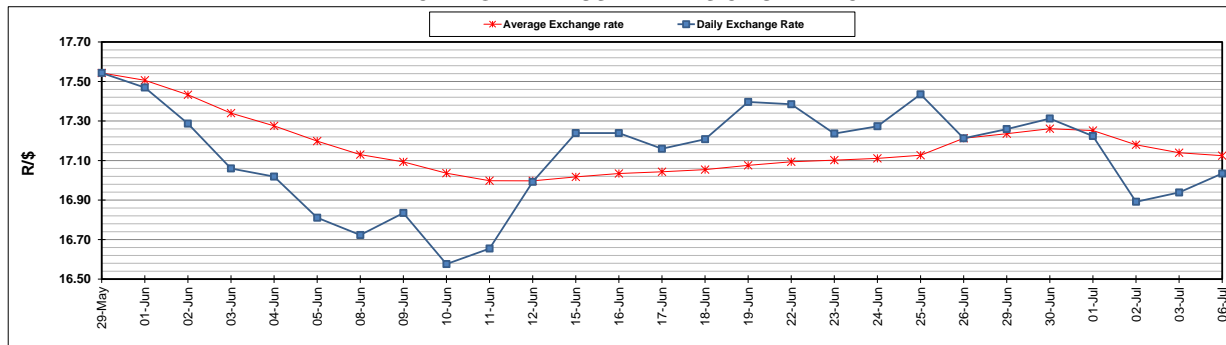
	PETROL 95 ULP	PETROL 93 ULP & LRP	DIESEL 0.05%	DIESEL 0.005%	ILL. PAR.
GAUTENG PUMP PRICE (SA c/l) AS FROM 01/07/2020	1,512.000	1,483.000	-	-	-
WHOLESALE PRICE (SA c/l) AS FROM 01/07/2020	-	-	1,303.560	1,307.960	703.828
SINGLE NATIONAL MAXIMUM RETAIL PRICE	-	-	-	-	882.000
BASIC FUEL PRICE - 06/07/2020 (SA c/l)	570.100	548.670	592.907	597.475	520.082
PRESS RELEASE CONTRIBUTION TO BFP 01/07/2020 - 06/07/2020 (SA c/l)	564.770	545.770	552.630	557.030	499.128
UNIT OVER/(UNDER) RECOVERY - 06/07/2020 (SA c/l)	(5.330)	(2.900)	(40.277)	(40.445)	(20.954)
AVERAGE BASIC FUEL PRICE 26/06/2020 - 06/07/2020	558.171	541.529	581.347	585.275	511.672
AVERAGE UNIT OVER/(UNDER) RECOVERY 26/06/2020 - 06/07/2020	(67.115)	(65.616)	(102.860)	(100.673)	(104.258)

ANALYSIS MOVEMENT OF AVERAGE OVER/(UNDER) RECOVERY

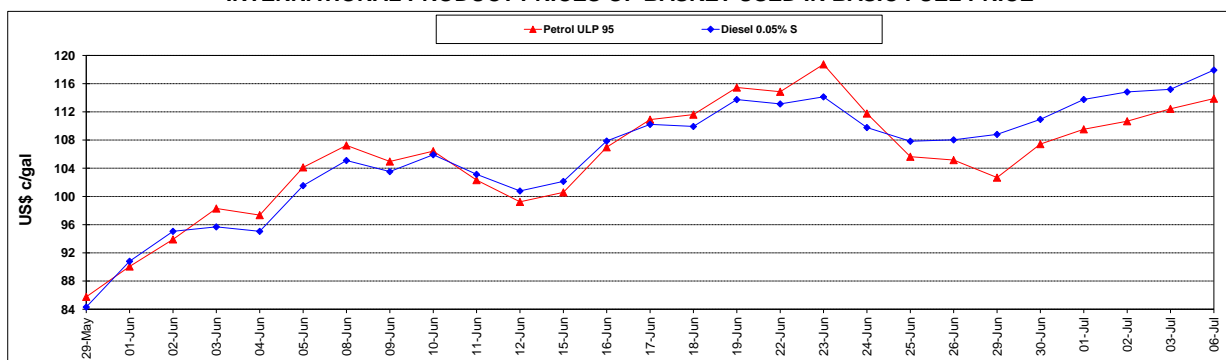
	PETROL 95	PETROL 93	DIESEL 0.05%	DIESEL 0.005%	ILL. PAR.
- MOVEMENT IN INTERNATIONAL PRODUCT PRICES	(67.196)	(65.695)	(102.945)	(100.759)	(104.333)
- MOVEMENT IN EXCHANGE RATE	0.081	0.079	0.085	0.085	0.075
AVERAGE UNIT OVER/(UNDER) RECOVERY 26/06/2020 - 06/07/2020	(67.115)	(65.616)	(102.860)	(100.673)	(104.258)

R/\$ EXCHANGE RATE - (R/\$17.0343 - 06/07/2020)

EXCHANGE RATE USED IN BASIC FUEL PRICE



INTERNATIONAL PRODUCT PRICES OF BASKET USED IN BASIC FUEL PRICE



BASIC FUEL PRICE IN SA CENTS PER LITRE

